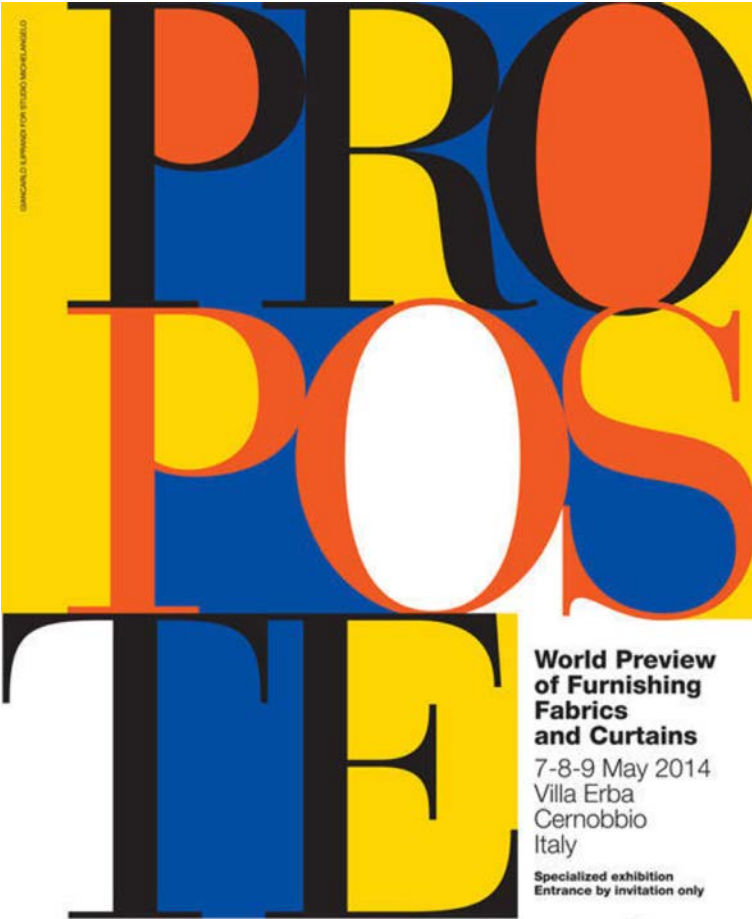


TRENDS REPORT Proposte, 7-8-9 May 2014

- STYLE MOOD
- FIBERS & BLENDS
- TEXTURES & SURFACES
- PATTERNS & PRINTS



DESIGNER'S FURNISHING FOR STUDIO MARCHETTI

**World Preview
of Furnishing
Fabrics
and Curtains**
7-8-9 May 2014
Villa Erba
Cernobbio
Italy
Specialized exhibition
Entrance by invitation only

proposte
FIERA PRODOTTORE
TENDUO D'ARREDAMENTO E TENDIAGGIO

Proposte srl - Viale Sarca 223 - IT-20126 Milano
Phone +39 02 6434054 - www.propostefair.it - info@propostefair.it

proposte

2014

STYLE MOOD

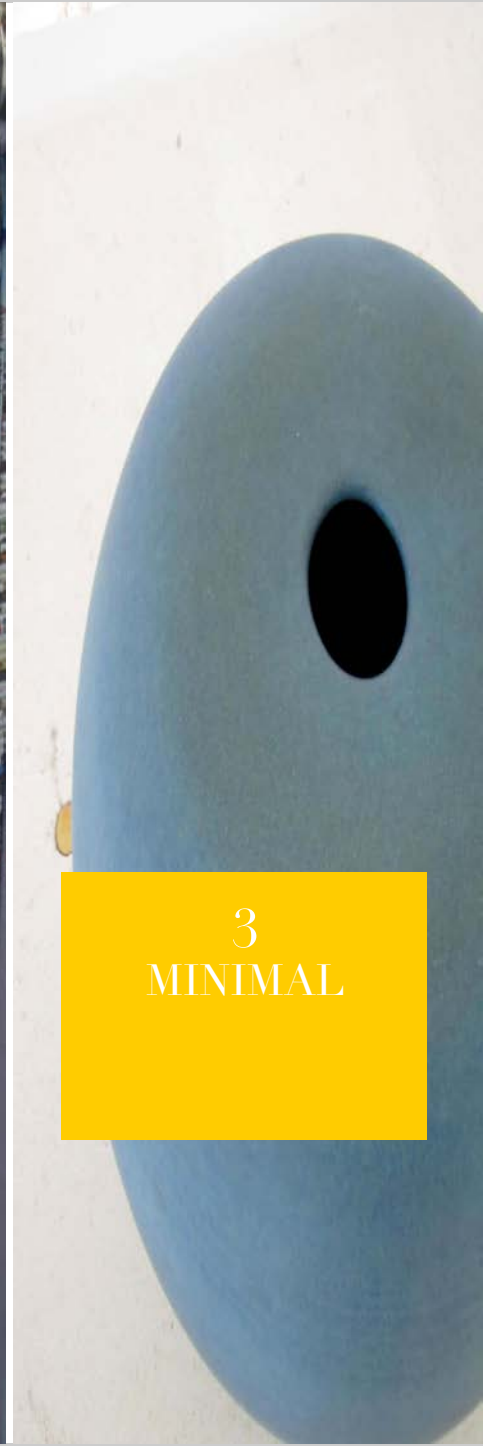




1
YOUTHFUL



2
CRAFTFUL



3
MINIMAL



4
TIMELESS



Manifattura Tessile Di Nole



Mario Cavelli



Textiles Vilber

Style Mood 1.YOUTHFUL. Influences from street and art universes give interior fabrics a fresh, young vibe. Not-so-ordinary patterns for home textiles, such as skulls, abstract animal skin, painterly brushstrokes or camouflage spots gain momentum, while cheerful breezes of color clashes add vibrant new energy.

proposte
2014



Europ Marchini



Devantex



Nelen & Delbeke



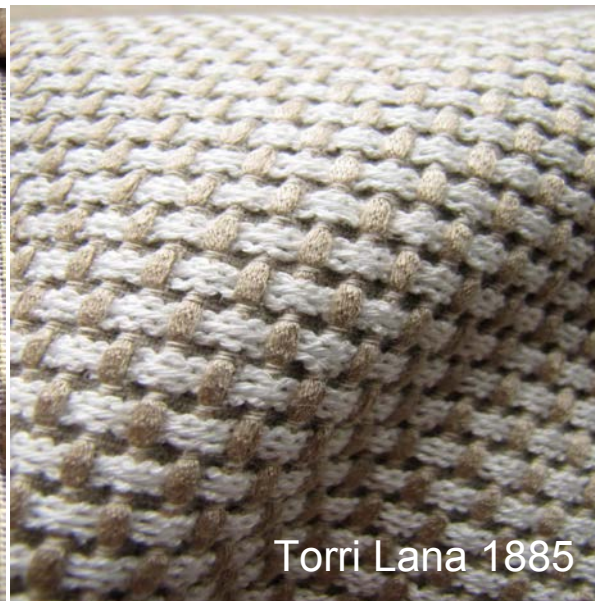
Martinelli Ginetto

Style Mood 2.CRAFTFUL. Increasingly mimicking fashion directions, furniture and curtain materials enchant with crafted surfaces, achieved via vintage-y weaves and rediscovered techniques, including needlepunching or dimensional fabric constructions.

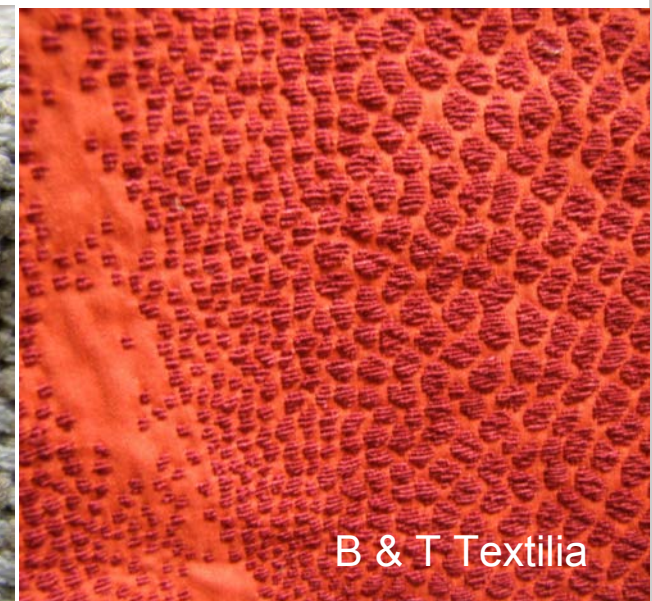
proposte
2014



Matisse



Torri Lana 1885



B & T Textilia



Yutes - Natural Fabrics



Schmitz - Werke



Casalegno Tendaggi

Style Mood 3.MINIMAL. Contemporary chic meets casual raw in curtains and upholstery textiles that speak the language of understatement and essential beauty. Emphasize on materials of prime quality, gentle to the touch, woven into constructions that bring a new level of craftsman expertise and exquisite detail.

proposte
2014



Libeco - Lagae



Telor



Lodetex



Pozzi Arturo



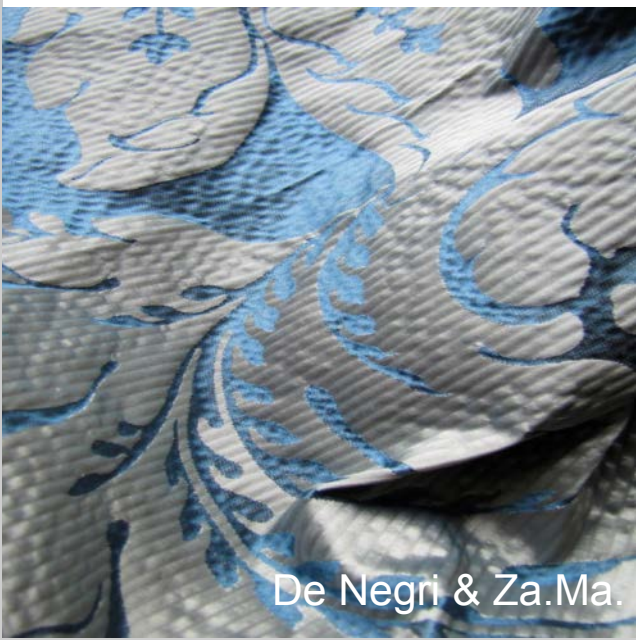
Monti Napoleone



Quenin by Tassinari & Chatel

Style Mood 4.TIMELESS. Luxury jacquard fabrics and classic interior trimming with bespoke or archive designs, continuously evoke alluring sophistication. Enforcing the textured surface direction, focus is put on subtle dimensional weaves, deliberating tactile styles of timeless elegance.

proposte
2014



De Negri & Za.Ma.



David Walters Fabrics



Monti Napoleone

proposte

2014

FIBERS & BLENDS





1
EARTH
RELATED



2
SHINE
INJECTIONS



3
MODERN
MANMADE

proposte 2014

Fibers & Blends 1.EARTH RELATED. Natural fiber content keeps predominant among high end upholstery and curtain collections. Commitment to achieve top quality with linen, wool, cotton or silk is predominant. Emerging ranges in pure hemp or organic linen set the bar even higher, blending luxury with sustainability and responsibility.



The Isle Mill - wool



Texital - cotton



Matisse - linen / wool



Libeco - Lagae - linen / wool

proposte

2014

Fibers & Blends 2.SHINE INJECTIONS. Mills experiment more with metallic and shine fibers to create polished surface effects and glitter intrigue. Weathered, placement, metallic foils enhance eccentric fancies and silver spray effects re-style plush velvets. Gold and iridescent colors uptrend, while transparent glazed sheen upswing as novelty.



Fiorete



Italtessil



Angelo Vasino - divisione home

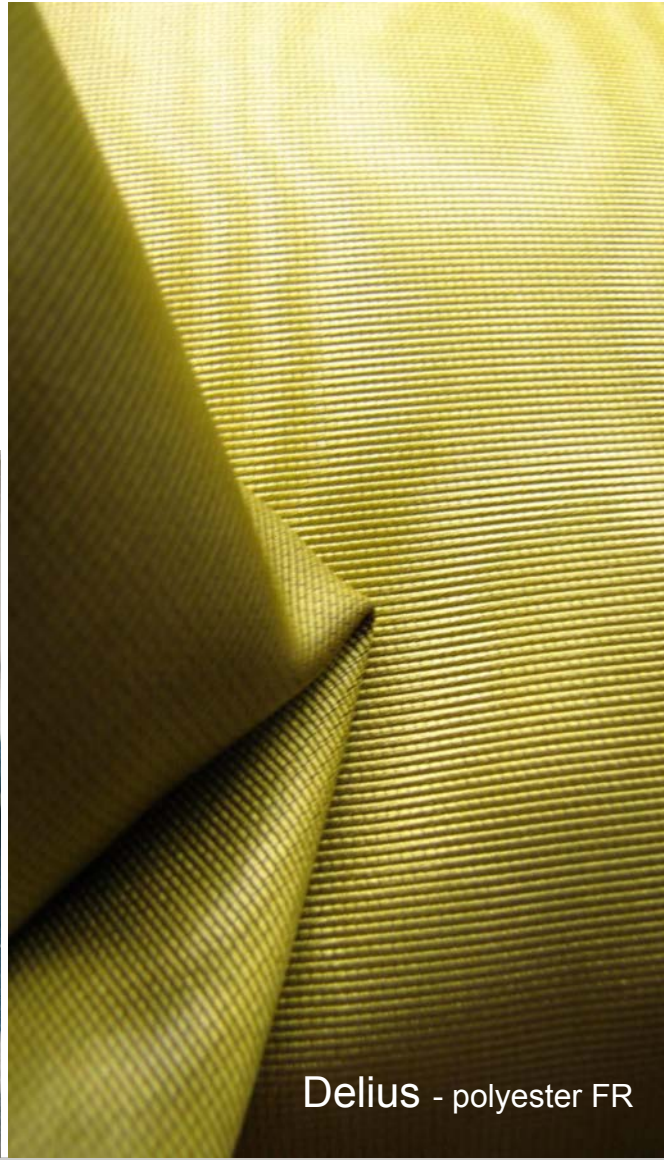
proposte

2014

Fibers & Blends 3. MODERN MANMADE. Advanced synthetic fiber technology slowly integrates into interior fabrics. Polyester FR and Trevira CS keep being the unparalleled staple manmade material choices for their functional properties. Yet Modal and Tencel celluloses come to the forefront in highly decorative home textiles while premium recycled polyester Newlife marks a new breed of sheers, curtain, upholstery fabrics and beyond.



Danzo - divisione arredo
recycled polyester Newlife



Delius - polyester FR



Baumann Dekor - Lyocell Tencel blend

proposte

2014

TEXTURES & SURFACES





1
INTRICATE
& DENSE

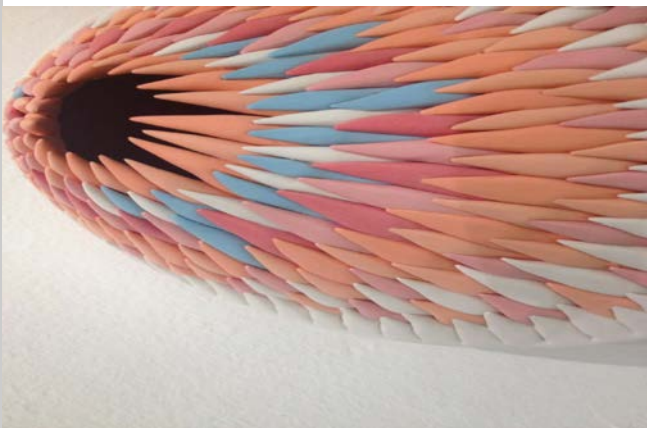


2
PADDED
& FOAMY

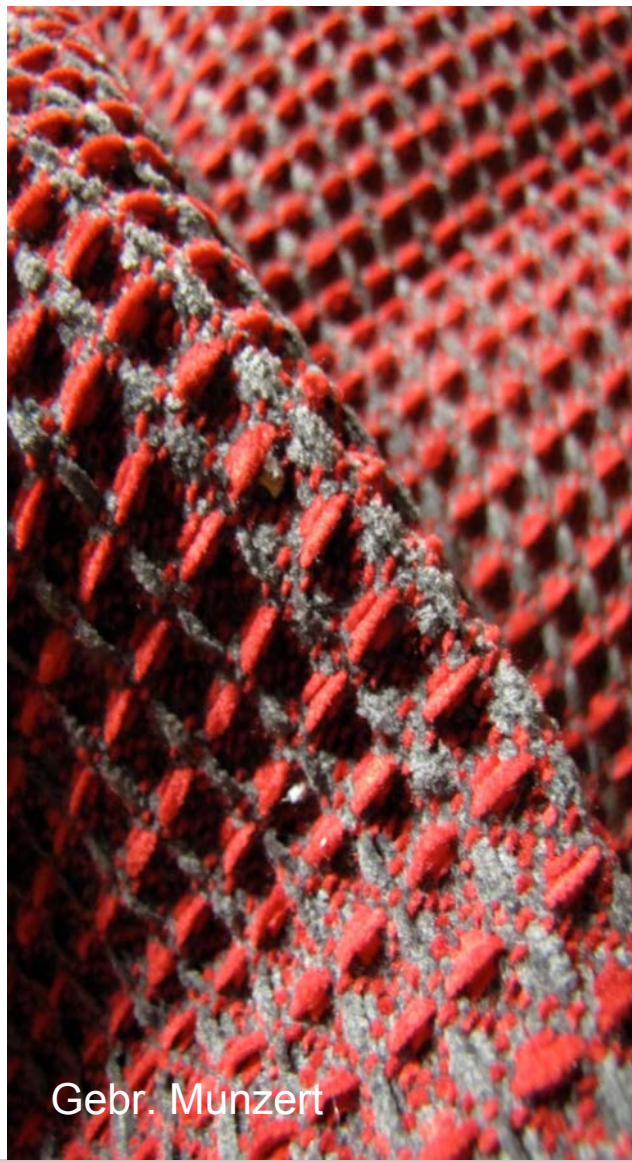


3
OPENWORKED
& AIRY

Textures & Surfaces 1. INTRICATE & DENSE. A crisscross of interwovens with mismatched yarns, dimensional embossing and complex weaves awakes new material developments. Mimicking braided textures, waffle surfaces, baskets and more, they take interiors to a new level of modernity.



Texital



Gebr. Munzert



Italtessil

Textures & Surfaces 2.PADDED & FOAMY. Lofty volume is novelty. As quilted textures made a popular return to interiors, padded fabrics regain momentum. Authentic and faux quilting (via embossing or dimensional weave) combine with padding or foam backing, while dimensional, spongy weaves create next generation interior materials.

proposte
2014



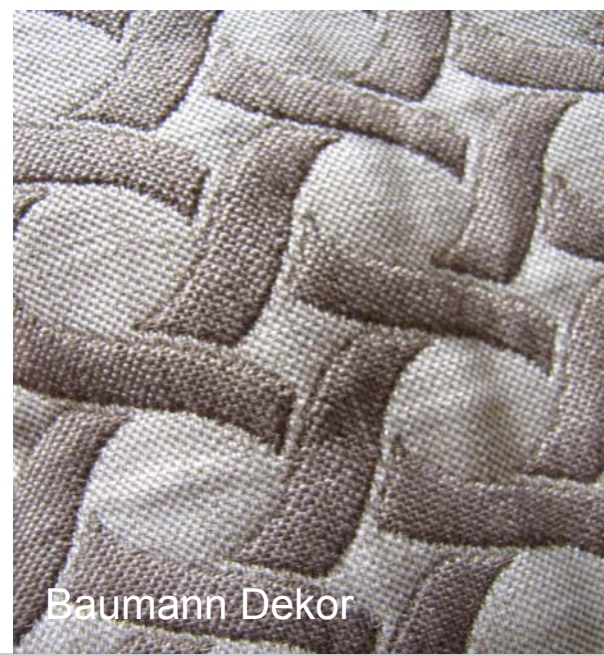
Alcantara



Aznar Textil



Aznar Textil

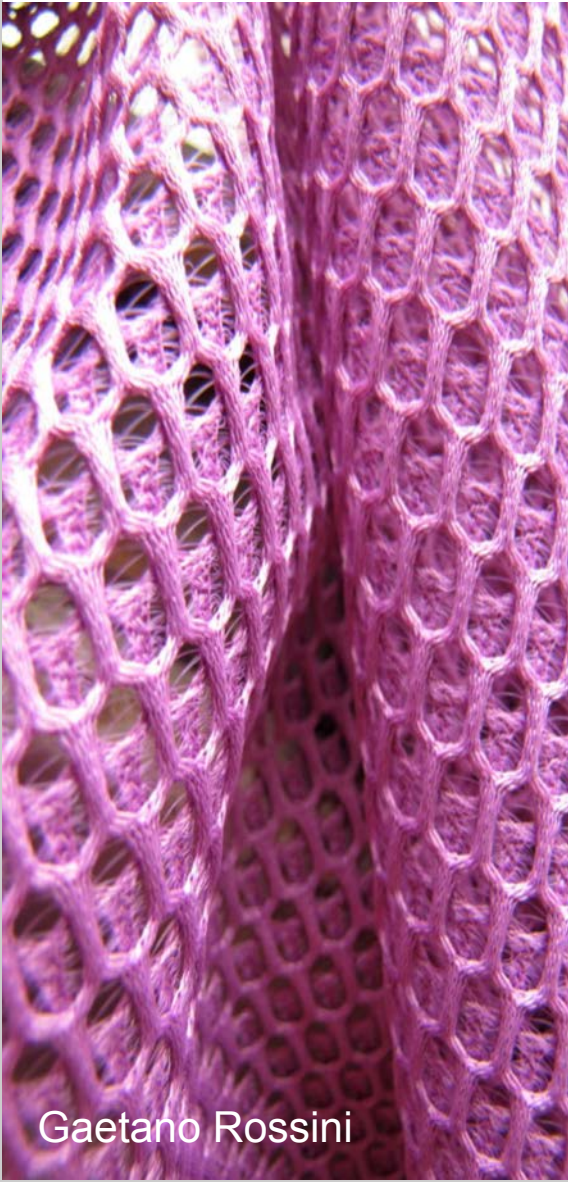


Baumann Dekor



Gaetano Rossini

Textures & Surfaces 3.OPENWORKED & AIRY. Nets are revisited, surprising with macro-scale patterns, geometric designs and bright color options. Novelty developments include three-dimensional mesh with high resistance and fire retardant capacities, targeting applications in forward contract designs and interiors.



Gaetano Rossini



Morton Young & Borland



proposte

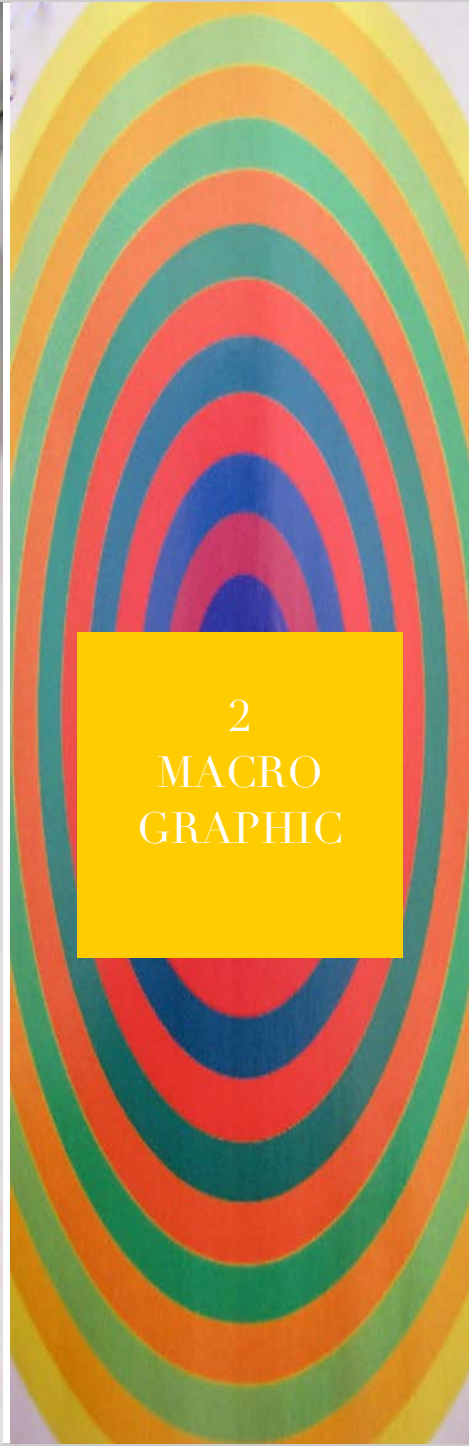
2014

PATTERNS & PRINTS





1
DILUTED
TRAIT



2
MACRO
GRAPHIC



3
PAINTERLY
FLORAL



4
DANDY
CLASSICS



Athenea - Texathenea



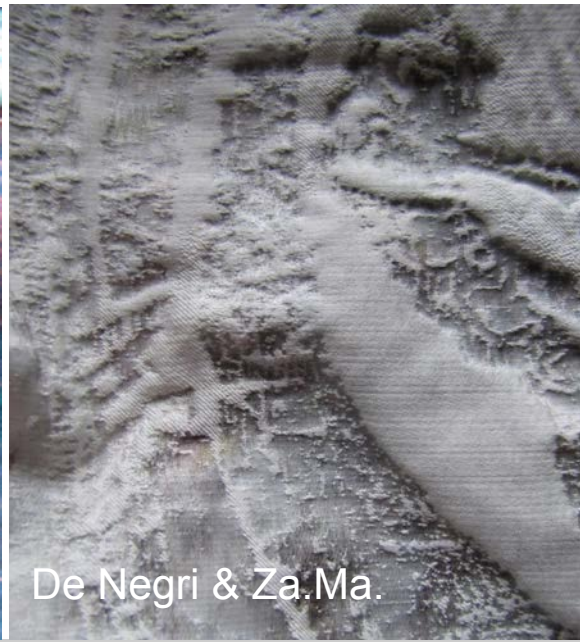
Standfast & Barracks

proposte 2014

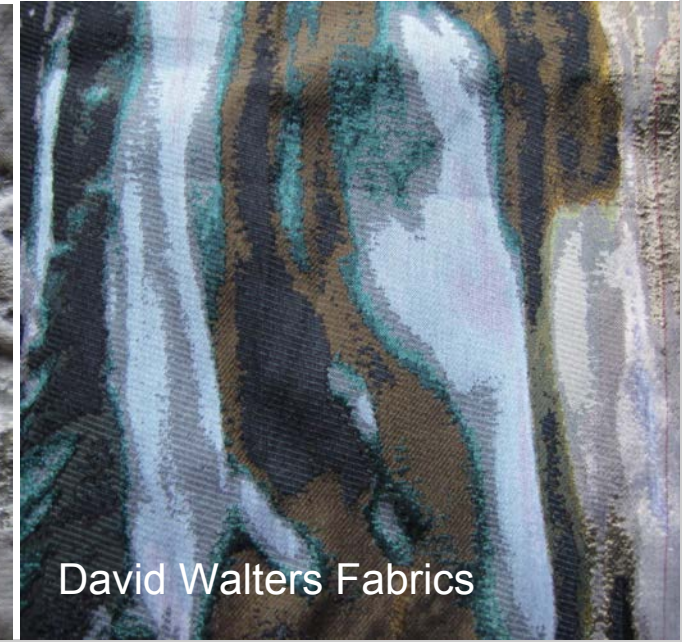
Patterns & Prints 1.DILUTED TRAIT. Designs (in jacquard and prints) move away from clean lines, favoring painterly, blurred styles. Expressive hand is key. Colors blur one into another.



Standfast & Barracks



De Negri & Za.Ma.



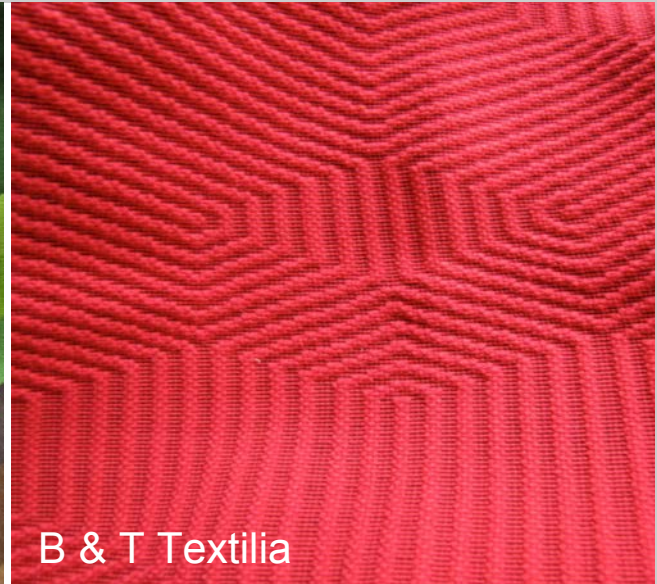
David Walters Fabrics



Manifattura Tessile di Nole



Textiles Vilber



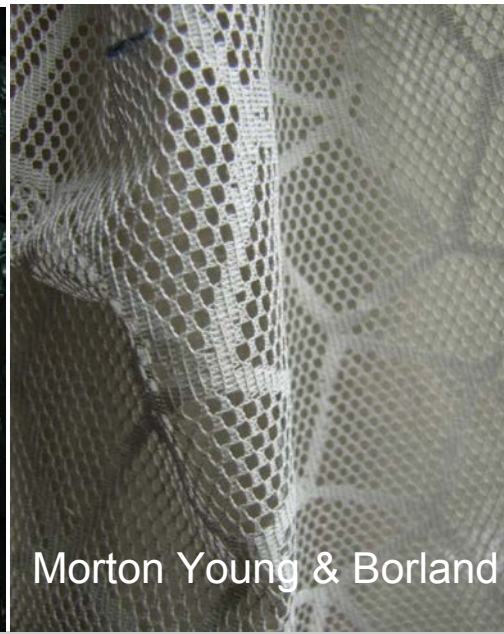
B & T Textilia

proposte 2014

Patterns & Prints 2. MACRO GRAPHIC. Printed or woven geometrics keep adding a strong visual story to drapery, sheers and upholstery textiles. The pattern scales grow substantially, and graphics evolve with authentic to optical three-dimensionality effects.



Torri Lana 1885



Morton Young & Borland



Gebr. Munzert



Athenea - Texathenea



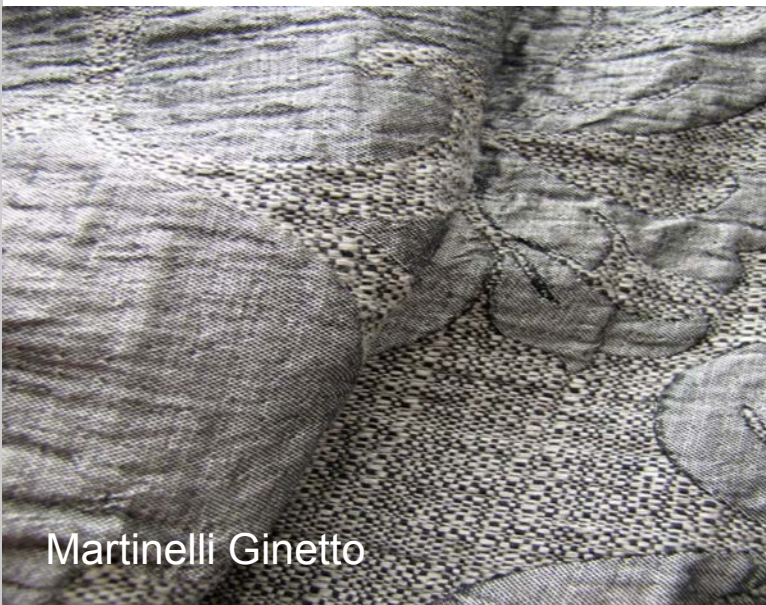
Lodetex



Danzo - divisione arredo

proposte 2014

Patterns & Prints 3. PAINTERLY FLORAL. Digital or pigment printed florals, Ottoman ornamentals and abstract swirls get moody via painterly designs and blurred, undefined lines. Out-of-focus is the new watchword.



Martinelli Ginetto



Athenea - Texathenea



Delius



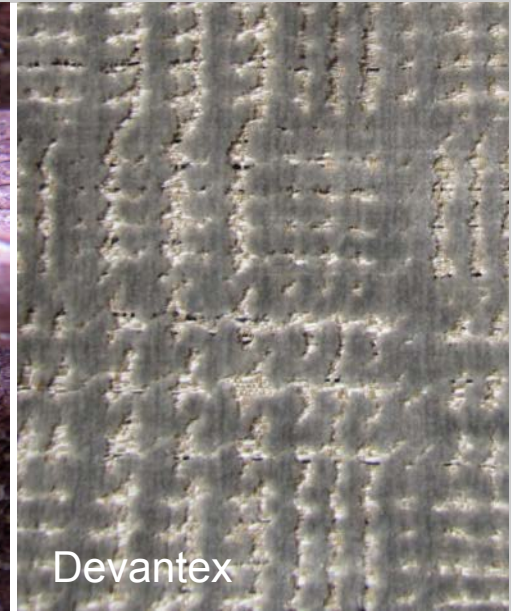
The Isle Mill



Mario Cavelli



Redaelli Velluti - a division of Marzotto



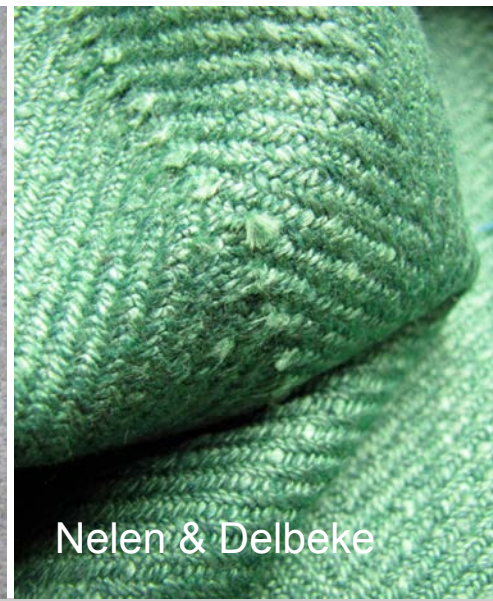
Devantex

proposte 2014

Patterns & Prints 4. DANDY CLASSICS. Emotion is given by the classy playfulness of elegant textures, such as chevron, Prince of Wales, herringbone, houndstooth, up to gingham and pinstripe variations. The archive patterns get printed, embossed or woven into velvety upholstery, linen gauzes, dense wools for drapery and upholstery applications.



Alcantara



Nelen & Delbeke



Telor



Show Ambiance / Proposte 2014



See you at: **proposte**
2015